

## STUDS AND ADAPTERS FOR MONITRAN VIBRATION SENSORS

### Male Studs and Grub Screws

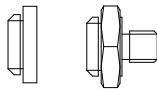


Product Code	From	To
MS036	1/4" - 28 UNF	M6
MS067	1/4" - 28 UNF	M8
MS124	1/4" - 28 UNF	M10
MS132	1/4" - 28 UNF	M12
MS024	10 - 32	10 - 32
MS028	10 - 32	M8
MS032	M6 x 12	M6 x 12
MS068	1/4" - 28 UNF	1/4" - 28 UNF

### 1135 Adapters

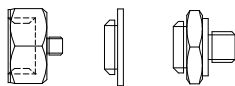
Product Code	From	To
MS139	1/2" - 20UNF	M6
MS140	1/2" - 20UNF	Glue Base

### Quick Fit Adapters (1100, 1185, etc.)



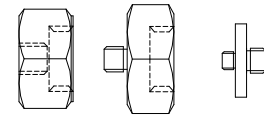
Product Code	From	Male/ Female	To	Male/ Female
MS001	Q/F	Male	Glue Base	Male
MS002	Q/F	Male	M8	Male
MS003	Q/F	Male	M10	Male
MS004	Q/F	Male	1/4" - 28UNF	Male
MS006	Q/F	Male	M6	Male
MS144	Q/F	Male	M8*	Male
MS146	Q/F	Male	M10*	Male

### 1120 Quick Fit Adapters



Product Code	From	Male/ Female	To	Male/ Female
MS010	1120Q/F	Male	Glue base	
MS055	1120Q/F	Male	M8	Male
MS072	1120Q/F	Male	M6	Male
MS102	1120Q/F	Female	10 - 32	Male
MS117	1120Q/F	Male	1/4" - 28 UNF	Male

### Other Adapters



Product Code	From	Male/ Female	To	Male/ Female
MS005	Q/F	Male	1/4" - 28UNF	Female
MS007	Q/F	Male	10 - 32	Female
MS008	Q/F	Male	M8	Female
MS011	1/4" - 28UNF	Male	Q/F	Female
MS013	1/4" - 28UNF	Male	Glue Base	
MS014	1/4" - 32	Male	Glue Base	
MS015	1/4" - 32	Male	Q/F	Female
MS019	1/4" - 32	Male	Glue Base	
MS026	M8	Female	M8 Conical	Male
MS030	Q/F	Female	M8	Female
MS038	Q/F	Female	M8 Conical	Male
MS056	1/2"UNF	Female	1/4" - 28UNF	Male
MS061	1/4" - 28UNF	Male	1/4" - 32	Male
MS118	M8	Male	Q/F	Female

### Isolation Adapters

Product Code	From	Male/ Female	To	Male/ Female
MS027	M6	Male	M6	Female
MS034	1/4" - 28UNF	Male	1/4" - 28UNF	Female
MS040	M10	Male	M10	Female
MS062	10-32	Male	10-32	Male
MS093	Q/F	Male	M8	Male
MS112	M8	Male	M8	Female

### NOTES

1) This list is not exhaustive and contains many special purpose adapters that are not kept in stock. Please enquire for availability.

2) MTN/1100, 1185 and similar size sensors are often supplied fitted with male studs. These consist of a 1/4" female base sensor together with one of the male studs or grub screws on the first table above. These studs may be removed and changed for an alternative size stud if necessary. This is preferable to searching for a female to male adapter which may reduce the performance of the sensor.

### MONITRAN LTD

Monitor House | 33 Hazlemere Road | Penn | Bucks | HP10 8AD | UK

Tel: +44 (0)1494 816569 Email: [info@monitran.com](mailto:info@monitran.com) Registered in England No. 2054040

Fax: +44 (0)1494 812256 Web: [www.monitran.com](http://www.monitran.com) Vat No. GB442 4883 40

We reserve the right to alter specifications without prior notice

